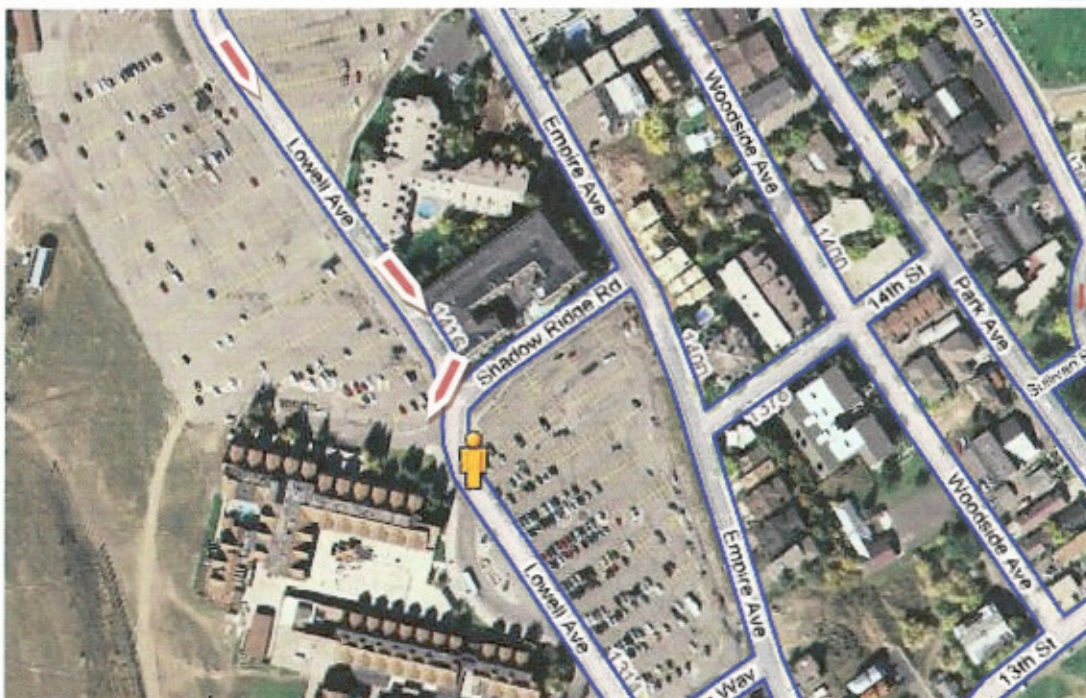




From the I-80 Turnoff, Travel into Park City, on Hwy. 224. Turn Right on to Empire Ave., then another Right on Silver King Dr. then Left on to Lowell Ave. There's a large parking lot as well as underground parking. Look for the sign showing an arrow to the Lodge and Registration



Building B is the first building with underground parking and registration.

Building A is located behind the outdoor skating rink.

Be sure to mention your with the "Area 69 Post Conference" when making your hotel reservations!!

Please call the Resort if you have ???



David Holland's
RESORT LODGING & CONFERENCE SERVICES
888-PARK-CITY

2009 Area 69 Post Conference Assembly – District 10
May 15-17, 2009
The Lodge At The Mountain Village